

BIAS TEE

K250 100 MHz to 40 GHz, V250 100 MHz to 60 GHz



K250

These bias tees are designed for applications where both DC and RF signals must be applied to a device under test. They are particularly suited for active device measurements. DC voltages of up to 30 volts at 0.5 amps may be applied to test devices with negligible effect on RF performance. Low RF throughline loss (<1 dB) and low return loss ensure negligible effect on measurements up to 60 GHz. An RF input DC block isolates the input port from the applied bias voltage.

Features

- Broadband, 0.1 to 60 GHz coverage
- Low SWR, low insertion loss
- K Connector® and V Connector® availability

Specifications

Model	Frequency range	Insertion loss	Return loss	RF power	DC voltage	DC current	DC port isolation	RF connectors	DC connectors
K250	0.1 to 40 GHz ^①	1.2 dB typ.	15 dB min. to 20 GHz 10 dB min. to 40 GHz	1W max.	30V max.	0.5A	20 dB at 0.1 GHz 40 dB above 0.5 GHz	Input: K(m) Output: K(f)	SMC(m)
V250	0.1 to 60 GHz ^①	2.2 dB typ.	13 dB min. to 20 GHz 9 dB min. to 40 GHz 8 dB min. to 60 GHz	1W max.	30V max.	0.5A	20 dB at 0.1 GHz 40 dB above 0.5 GHz	Input: V(m) Output: V(f)	SMC(m)

^① Usable between 0.04 and 0.1 GHz with degraded performance.

Temperature range: 0°C to +70°C

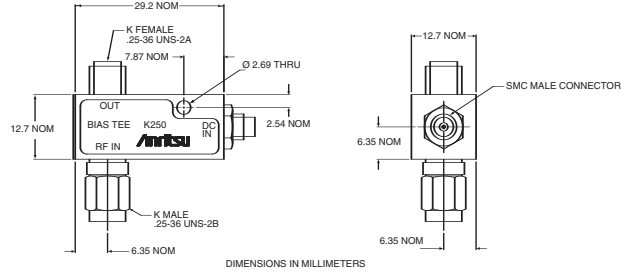
Ordering information

Please specify model/order number, name, and quantity when ordering.

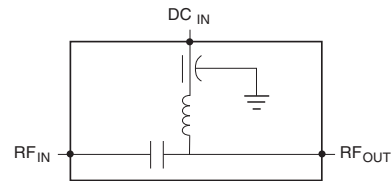
Model/Order No.	Name
K250	Precision Bias Tee, 100 MHz to 40 GHz
V250	Precision Bias Tee, 100 MHz to 60 GHz

Specifications

Temperature	0 to 60°C
Mounting position	Any
Weight	57g



Outline (K and V models)



Schematic diagram (K and V models)